

Advanced Sulfur Reduction (ASR) Sampling Probe

Superior Benefits

- ▶ Prevents sulfur plugging
- ▶ Reduces installation costs
- ▶ Reduces maintenance
- ▶ “Double block” option

Application

- ▶ Sulfur Recovery Units

The Need

Continuous, on-line analysis of tail gas is a requirement for efficient operation of an SRU. There are conditions, however, which prevent efficient operation from occurring. If the analyzer is not operating because the sample system is plugged, there is a loss of control and a loss of efficiency.

The problem is sulfur. It freezes, it condenses and it interferes with the analysis of the tail gas. The need is to reliably heat all parts of the sample system to prevent freezing and condensation. The problem is the steam used to heat traditional sample systems; it's unreliable and difficult to control. The need is to remove the majority of the sulfur from the sample stream before it becomes a problem in the rest of the sample system.

The need is to solve sampling problems.

The Solution

AMETEK's ASR 900 Sampling Probe.

This unique design removes the sulfur at sample point. The probe incorporates a condenser, coalescer, aspirator and sample line connections all in a temperature-controlled body.

The ASR 900 probe is controlled at precisely the correct temperature to reduce sulfur and prevent plugging by an integrated electrical heater approved for hazardous areas.

The ASR 900 probe reduces installation costs. Sulfur reduction at the sample point allows freedom in locating the analyzer system below the sample point. Only one process connection is required.

The integrated shut-off valves allow servicing without removing the probe from the process. Safety during maintenance is ensured because the probe body and the sulfur knockout can be dismantled without exposure to process gas. For additional safety integrity, the ASR has an option of double block valves.

AMETEK Process Instrument's ASR probe is an integral component of the 900 Air Demand Analyzer. Whatever the requirement at the sample point, AMETEK Process Instruments can supply a trouble-free engineered solution.



Advanced Sulfur Reduction (ASR) Sampling Probe

Advanced Sulfur Reduction (ASR) Sampling Probe

Performance Specifications

Ambient Temperature: -50 °C to 70 °C (-58 °F to 158 °F)

Utility Requirements

120/240V, 50/60 Hz, 150W

Less than 1.0 SCFM instrument air (from analyzer)

Process Connection: 1 1/2 in. M-NPT. Various ANSI flange adaptors available (ex: 1 1/2" to 3" at 150 lb or 300 lb.)

Ingress Protection

NEMA Type 4

Meets IP55

Dimensions (H x D): 127 x 267 mm (5 x 10.5 in.)
(requires 51 mm [2 in.] on either side for installation purposes)

Weight: 11.5 kg (25 lbs.)

Approvals and Certifications

CSA certification to CSA and UL Standards for General Safety Requirements

CSA certification to CSA and UL Standards for Class I, Division 1, Groups B, C and D

Ex d IIB + H₂ T3 (Class I, Zone 1, Group IIB + H₂)

ATEX Directive; II 2 G Ex d IIB + H₂ T3

Complies with all relevant European Directives

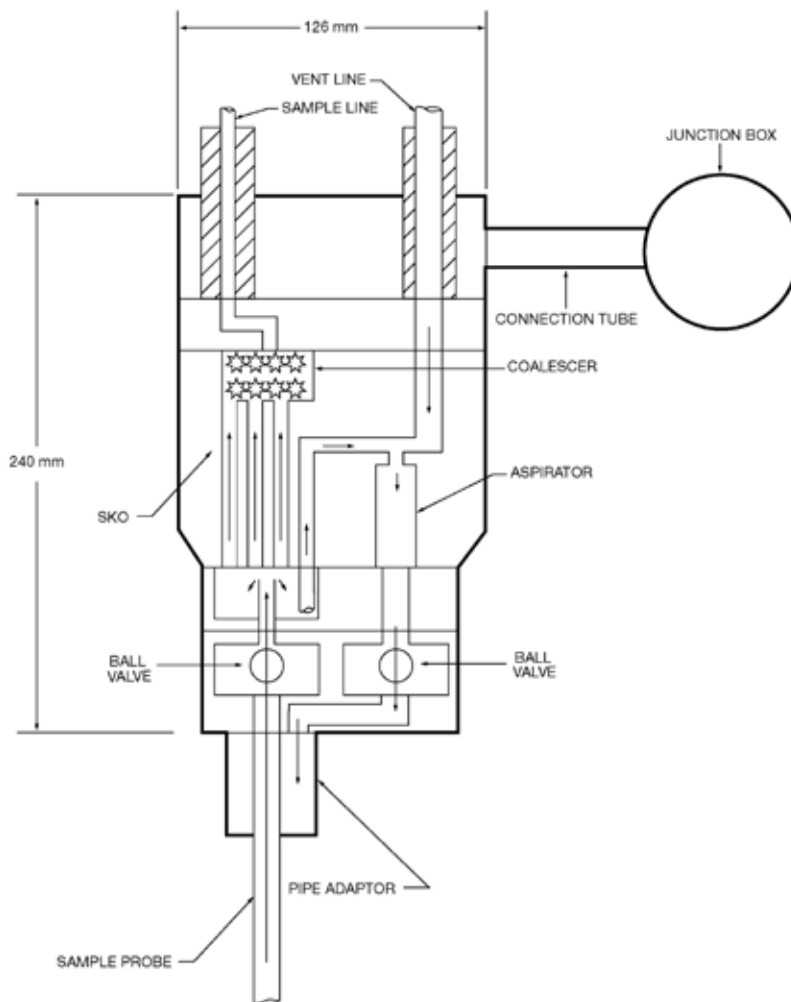
Russian Gostandart Ex Proof Certification; 1ExdIIBT3

Pressure Equipment Directive

Canadian Registration Number OH5289.235 ^{1, 2}

1. High temp version

2. ASME Boiler and Pressure Vessel Code 1998, Section VIII Division 1



AMETEK[®]
PROCESS INSTRUMENTS

2876 Sunridge Way N.E., Calgary, AB T1Y 7H9
Ph. +1-403-235-8400, Fax +1-403-248-3550
www.ametekpi.com



© 2012, by AMETEK, Inc.
All rights reserved. Printed in the U.S.A.
F-0187 Rev 4 (0512)

One of a family of innovative process analyzer solutions from AMETEK Process Instruments.
Specifications subject to change without notice.

SALES AND MANUFACTURING:

USA - Delaware
455 Corporate Blvd., Newark DE 19702 • Tel: +1-302-456-4400, Fax: +1-302-456-4444

USA - Oklahoma
2001 N. Indianwood Ave., Broken Arrow OK 74012 • Tel: +1-918-250-7200, Fax: +1-918-459-0165

USA - Pennsylvania
150 Freepoint Road, Pittsburgh PA 15238 • Tel: +1-412-828-9040, Fax: +1-412-826-0399

WORLDWIDE SALES AND SERVICE LOCATIONS:

USA - Texas
Tel: +1-713-466-4900, Fax: +1-713-849-1924

BRAZIL
Tel: 55 19 3825 8770, Fax: 55 19 3935 8773

CHINA
Beijing / Tel: 86 10 8526 2111, Fax: 86 10 8526 2141
Chengdu / Tel: 86 28 8675 8111, Fax: 86 28 8675 8141
Guangzhou / Tel: 86 20 8363 4768, Fax: 86 20 8363 3701
Shanghai / Tel: 86 21 5868 5111, Fax: 86 21 5866 0969

FRANCE
Tel: 33 1 30 68 89 20, Fax: 33 1 30 68 89 29

GERMANY
Tel: 49 21 59 91 36 0, Fax: 49 21 59 91 36 39

INDIA
Tel: 91 80 6782 3200, Fax: 91 80 6782 3232

SINGAPORE
Tel: 65 6484 2388, Fax: 65 6481 6588

WESTERN RESEARCH[®]