

## ta3000F Method W-002

Determination of CO<sub>2</sub>, C<sub>1</sub>, C<sub>2</sub> and C<sub>2</sub> = from Water

### Introduction

The Trace Analytical™ ta3000F high sensitivity gas chromatograph, from AMETEK Process Instruments, is ideally suited for the determination of high ppb to ppm carbon dioxide, methane, ethane and ethylene in ground water.

Organic components come from various bacterial activities and may also be part of the spill itself. The samples are removed from the water vessel before analysis by headspace extraction as explained in Method W-001.

The ta3000F is chosen for this application because it accommodates multiple columns and valves, and has built in data handling and automation.

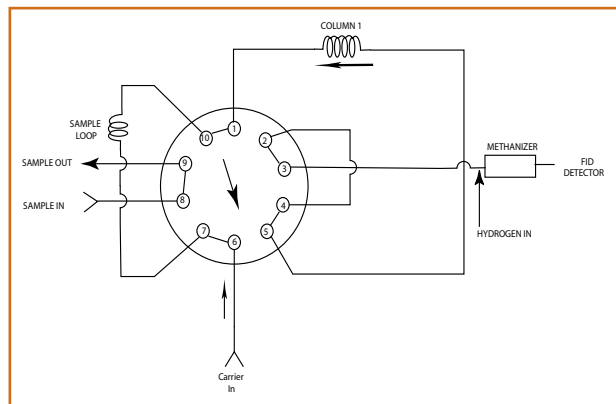


Figure 1. Flow diagram for method W-002.

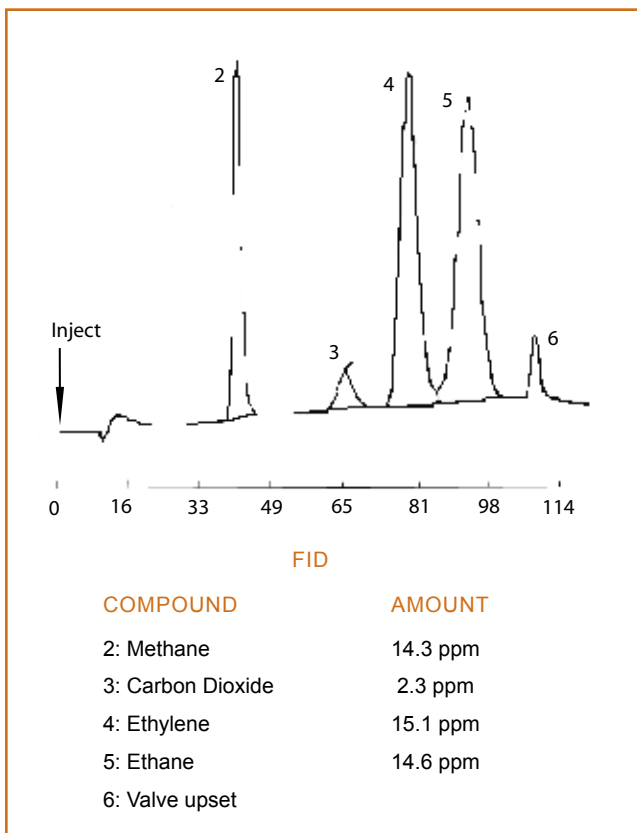


Figure 2. Chromatogram

### ta3000F High Sensitivity Gas Chromatograph Analytical Method

The system employs Trace Analytical Flame Ionization Detector (FID) for determination of hydrocarbons and carbon dioxide. The 10-port valve injects the sample onto the analytical column and back flushes the column to the detector after the run (see Figure 1). This system is also equipped with a methanizer that converts carbon dioxide to methane, which can be determined at ppb levels by the FID. The chromatogram (Figure 2) on the following page depicts a standard separated on the system. The analysis takes less than 10 minutes.

Method W-002 is one of several application packages developed by for Trace Analytical analyzers. Our applications group is always ready to consult with you about your specific analytical requirements. Please contact AMETEK Process Instruments or your local AMETEK representative for information on our Trace Analytical analyzers.



455 Corporate Blvd., Newark, DE 19702  
Ph. +1-302-456-4400, Fax +1-302-456-4444  
www.ametekpi.com



© 2010 by AMETEK, Inc.  
All rights reserved. Printed in the U.S.A.  
F-0338 Rev 1 (1210)

*One of a family of innovative process analyzer solutions from AMETEK Process Instruments.  
Specifications subject to change without notice.*

**SALES AND MANUFACTURING:**

**USA - Oklahoma**  
2001 N. Indianwood Ave., Broken Arrow OK 74012 • Tel: +1-918-250-7200, Fax: +1-918-459-0165

**USA - Pennsylvania**  
150 Freepoint Road, Pittsburgh PA 15238 • Tel: +1-412-828-9040, Fax: +1-412-826-0399

**CANADA - Alberta**  
2876 Sunridge Way N.E., Calgary, AB T1Y 7H9 • Tel: +1-403-235-8400, Fax: +1-403-248-3550

**WORLDWIDE SALES AND SERVICE LOCATIONS:**

<b>USA - Texas</b> Tel: +1-713-466-4900, Fax: +1-713-849-1924	<b>FRANCE</b> Tel: 33 1 30 68 89 20, Fax: 33 1 30 68 89 29
<b>CHINA</b> Beijing / Tel: 86 10 8526 2111, Fax: 86 10 8526 2141 Chengdu / Tel: 86 28 8675 8111, Fax: 86 28 8675 8141 Guangzhou / Tel: 86 20 8363 4768, Fax: 86 20 8363 3701 Shanghai / Tel: 86 21 5868 5111, Fax: 86 21 5866 0969	<b>GERMANY</b> Tel: 49 21 59 91 36 0, Fax: 49 21 59 91 3639
	<b>INDIA</b> Tel: 91 80 6782 3200, Fax: 91 80 6782 3232
	<b>SINGAPORE</b> Tel: 65 6484 2388, Fax: 65 6481 6588