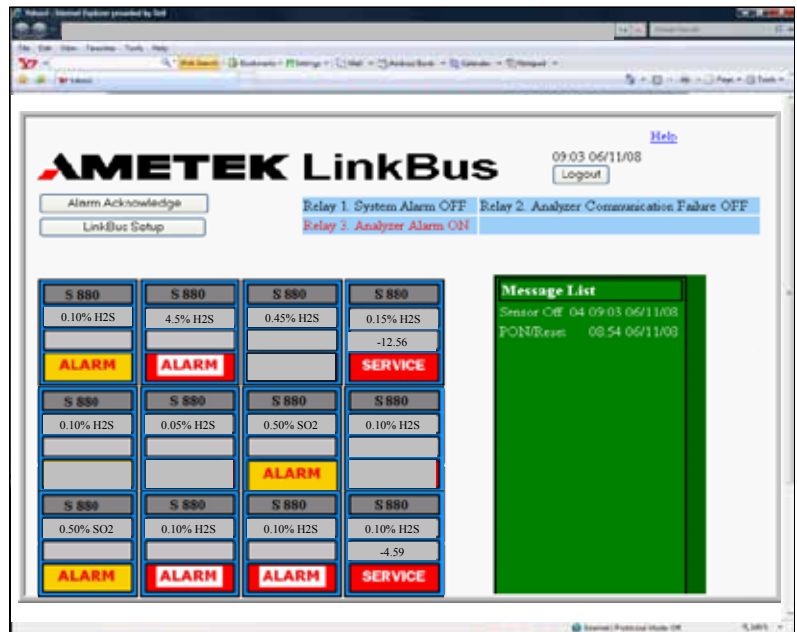


LinkBus RIMS (Remote Instrument Monitoring System)

The AMETEK LinkBus RIMS (Remote Instrument Monitoring System) provides the customer with plant-wide PC access to process analyzers using the existing web browser or through Fieldbus™, Modbus™ protocol-based DCS systems. The LinkBus system is available for IQ and 2000 controller-based Thermox flue gas analyzers, the 4000 and 880 Series photometric analyzers and the 5000 Series moisture analyzers. Easy access to analyzer information and trend data allows the maintenance department to make the most efficient use of limited resources and to determine process problems versus invalid analyzer data. The system can be configured by the user to allow third party access to factory personnel in order to provide expertise to assist in troubleshooting. The elimination of routine maintenance visits allows focused attention where it is most needed. Enhanced reliability and improved analyzer performance both lead to tighter process control.



LinkBus RIMS multiple analyzer view page

LinkBus Specifications

Diagnostics

- Watchdog Timer
- Service Alarm (trouble alarm)

RS-485 (Analyzer) Port

- Supports up to 16 devices
- Distance: 4000 feet (1200 m) max.
- Media: single shielded, twisted-pair, 18-24 AWG

Network Ports

- Ethernet: IEEE 802.3 10/100 Base-T, auto-sensing
- Media: Category 5e UTP or STP (recommended)
- Foundation Fieldbus H1

Protocols Supported

- HTTP (web pages)
- FTP (software updates)
- SMTP (e-mail)
- POP3 (e-mail)

Modbus

Foundation Fieldbus

Browsers Supported

- Microsoft Internet Explorer V5.0 or higher
- Netscape Communicator V4.73 or higher

Power Requirements

100-240 VAC, 50/60 Hz 0.1A

Alarm Contacts

- Four 1A, 30V max, noninductive load, AC or DC, type NEC Class 2
- One contact configured for system alarm

Environment

- Ambient Temperature 32°F to 122°F (0°C to 50°C)
- Relative Humidity 10% to 80%, non-condensing
- IEC Installation Category II
- IEC Pollution Degree 2

Enclosure

- Indoor/outdoor use UL Type 4X and IP65
- Hazloc This device is for use only in General Purpose areas

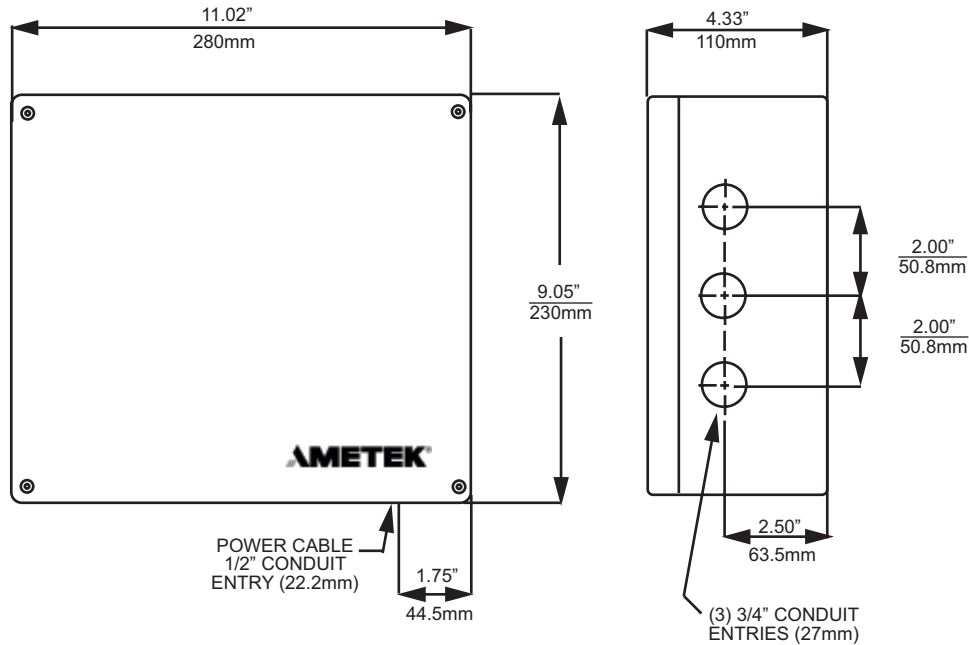
Display Information for Each Analyzer

- Gas concentration for each measured species
- Alarm status
- Principal diagnostic parameters
- Actual parameters vary depending on the capabilities of the supported analyzers

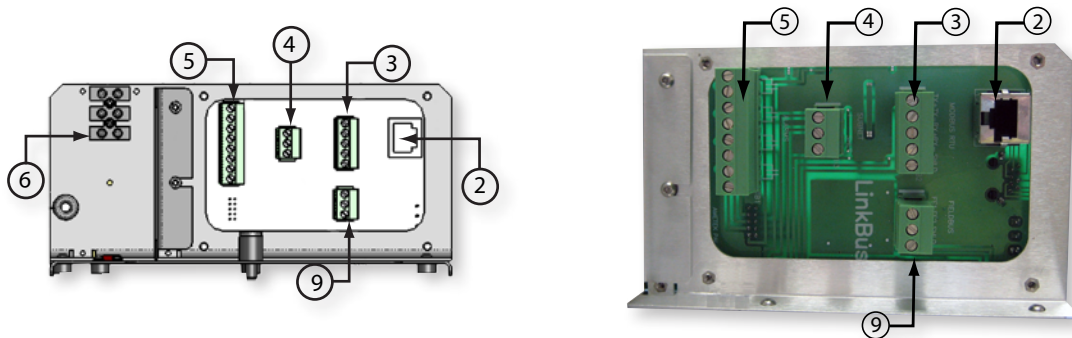
Security

- Password protection to prevent unauthorized access to parameters and settings.

Mounting information for the LinkBus RIMS



Connection diagram for LinkBus RIMS



- 2. Ethernet Connection
- 3. Modbus RTU
- 4. Subnet
- 5. Alarms
- 6. Power/Ground
- 9. Fieldbus



150 Freeport Road, Pittsburgh, PA 15238
 Ph. +1-412-828-9040, Fax +1-403-826-0399
 www.ametekpi.com



© 2012, by AMETEK, Inc.
 All rights reserved. Printed in the U.S.A.
 F-0118 Rev 4 (0312)

One of a family of innovative process analyzer solutions from AMETEK Process Instruments.
 Specifications subject to change without notice.

SALES AND MANUFACTURING:

USA - Delaware
 455 Corporate Blvd., Newark DE 19702 • Tel: +1-302-456-4400, Fax: +1-302-456-4444

USA - Oklahoma
 2001 N. Indianwood Ave., Broken Arrow OK 74012 • Tel: +1-918-250-7200, Fax: +1-918-459-0165

CANADA - Alberta
 2876 Sunridge Way N.E., Calgary, AB T1Y 7H9 • Tel: +1-403-235-8400, Fax: +1-403-248-3550

WORLDWIDE SALES AND SERVICE LOCATIONS:

USA - Texas
 Tel: +1-713-466-4900, Fax: +1-713-849-1924

BRAZIL
 Tel: 55 19 3825 8770, Fax: 55 19 3935 8773

CHINA
 Beijing / Tel: 86 10 8526 2111, Fax: 86 10 8526 2141
 Chengdu / Tel: 86 28 8675 8111, Fax: 86 28 8675 8141
 Guangzhou / Tel: 86 20 8363 4768, Fax: 86 20 8363 3701
 Shanghai / Tel: 86 21 5868 5111, Fax: 86 21 5866 0969

FRANCE
 Tel: 33 1 30 68 89 20, Fax: 33 1 30 68 89 29

GERMANY
 Tel: 49 21 59 91 36 0, Fax: 49 21 59 91 3639

INDIA
 Tel: 91 80 6782 3200, Fax: 91 80 6782 3232

SINGAPORE
 Tel: 65 6484 2388, Fax: 65 6481 6588