

## WDG-IV FLUE GAS OXYGEN ANALYZER

Close-coupled extractive design for fast response in a wide range of flue gas applications up to 3000°F (1648°C). Completely field serviceable.



### SENSOR

**Principle of Operation:** Zirconium oxide for net oxygen measurement.

**Output Range:** From 0-1% to 0-100%

**Accuracy:** ± 0.75% of measured value or ± 0.05% oxygen, whichever is greater

**Response:** 90% of a step change < 6 sec.

**Drift:** < 0.1% of cell output per month (< 0.005% O<sub>2</sub> per month with 2% O<sub>2</sub> applied)

**Aspirator Air Requirements:** 10 to 20 scfh (4.7 to 9.4 L/min) at 15 to 100 psig (1 to 7 kg/cm<sup>2</sup>)

**Max. Flue Gas Temp / Probe Type:**

1300°F (704°C) / 316 SS  
1875°F (1024°C) / 310 SS  
3000°F (1648°C) / Hexoloy®

**Probe Lengths:**

SS: 24" - 108" (60 cm - 271 cm)  
Hexoloy®: 24" - 72" (60 cm - 182 cm)

**Max. Sample Dewpoint:** 392°F (200°C) standard. High dewpoint option for sample dewpoints up to 700°F (371°C).

**Sample Pressure:** ± 10 in. water gauge

**Environment:**

Ambient Temp.: -5°F to 160°F (-20°C to 71°C); -5°F to 140°F (-20°C to 60°C) with Div. 2 Option  
Relative Humidity: 10% to 90%, non-condensing

**Enclosure:** Lift-off NEMA 3R, weather resistant, stainless steel. Optional hinged NEMA 4X (IP56), explosion-proof, purged, and floor mount versions available.

**Power Requirements:** 115 VAC, ± 10%, 47-63 Hz, 600 VA max. (650 VA max. floor mount option); 230 VAC, ± 10%, 47-63 Hz, 1850 VA max. (1900 VA max. floor mount option)

**Calibration Gas Requirements:** Use calibration gases @ 10 psig, 1.5 scfh (0.70 kg/cm<sup>2</sup>, 0.7 L/min.)

O<sub>2</sub> Span Gas: Air or from 1.0 to 100% O<sub>2</sub>, balance N<sub>2</sub>

O<sub>2</sub> Zero Gas: 2% or from 0.1 to 10% O<sub>2</sub>, balance N<sub>2</sub>

**Communications:** RS-485 2-way addressable

**Environment:**

Ambient Temp: 14°F to 122°F (-10°C to 50°C)

Relative Humidity: 10% to 80%, non-condensing

**Enclosure:** Standard weatherproof NEMA 4 (IP 56) wall/panel mount. Optional GP (General Purpose) wall mount, GP 19" rack mount, GP panel mount, or stainless steel weatherproof NEMA 4X (IP 56) wall/panel mount. All are UL Listed for NEC Class I, Division 2 areas. Purged and explosion-proof versions also available.

**Calibration:** Oxygen cell lifetime extender. Calibrate or verify calibration. Store last calibration and verification data. Selectable calibration gas run time and process recovery time. Timed automatic calibration with optional Remote Calibration Unit.

**Power Requirements:** Nominal 115-230 VAC ± 10%, 47-63 Hz, 75 VA max.

**System Compliance:**

EMC Directive 2004/108/EC  
Low Voltage Directive 73/23/EEC

### SERIES 2000 CONTROL UNIT

**Display:** Four-line x 20-character vacuum fluorescent. Displays combinations of oxygen, time and date, cell temperature, user programmable text, thermocouple mV or cell mV. Password protection, programmable pressure compensation and context-sensitive help are also provided.

**Analog Output:** Two isolated linear current outputs. Select O<sub>2</sub>, cell temperature, thermocouple mV or cell mV. Each output can be 4-20 mA, 0-20 mA, 20-4 mA or 20-0 mA and is fully scalable. Hold or track during calibration and select degree of damping. Maximum load 1200 ohms.

**Alarms:** Two independent oxygen alarms, each high or low selectable. One alarm can be assigned as oxygen, calibrate or verify. Set relays to energize or de-energize on alarm.

**Contact Rating:** 0.5 A, 30V, 10 VA max. noninductive load, AC or DC

**Diagnostics:** Watchdog timer and service alarms. System test for A/D, RAM, EEPROM, and keypad. Display line 4 reserved for full text error and diagnostic messages. Twenty-entry event log.

### EXCESS FUEL OPTION

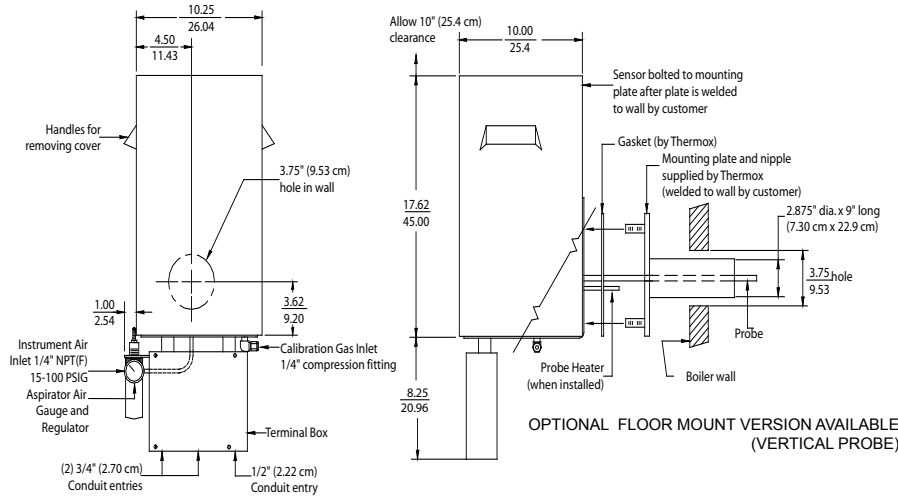
Extends operating range of analyzer from excess oxygen only to include substoichiometric conditions (excess fuel). Allows two-point calibration in excess fuel range. Measure, display, and provide alarms and analog outputs as follows:

- Display Options: Excess fuel, combustibles, oxides/ fuel, fuel/ oxides, combined excess oxygen/ excess fuel (combustibles)
- Display Range: 0-50% excess fuel
- Output Range: 0-1% to 0-50% excess fuel
- Alarms: Standard alarms can be used for high or low excess fuel levels

# WDG-IV ANALYZER

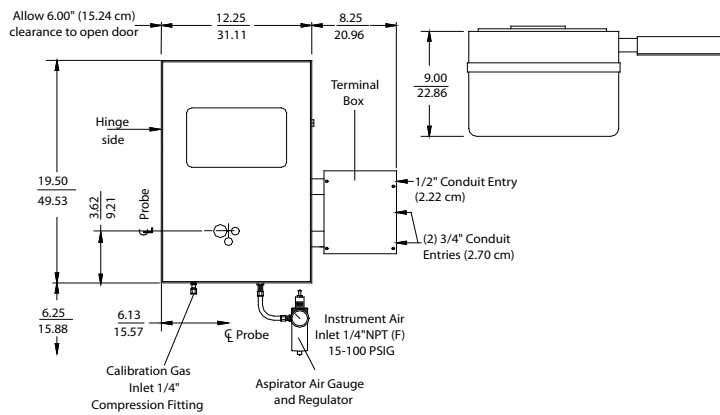
## STANDARD LIFT-OFF SENSOR ENCLOSURE

APPROX. WEIGHT: 37.6 LB (17KG)



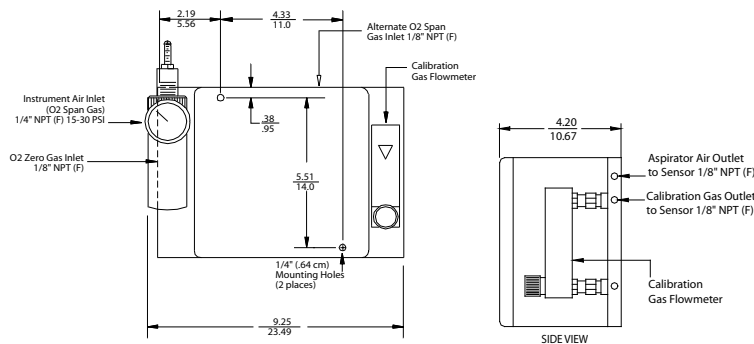
## OPTIONAL: HINGED SENSOR ENCLOSURE

APPROX. WEIGHT: 53 LB (24 KG)



## REMOTE CALIBRATION UNIT

RCU ENCLOSURE NEMA 4X - APPROX. WEIGHT: 8.0 LB (3.6 KG)



- NOTES:
1. All static performance characteristics are with operating variables constant.
  2. System accuracy referenced to 0.1 to 10% calibrated range.
  3. Response is to calibration gas (without flame arrestors).

**AMETEK**<sup>®</sup>  
PROCESS INSTRUMENTS

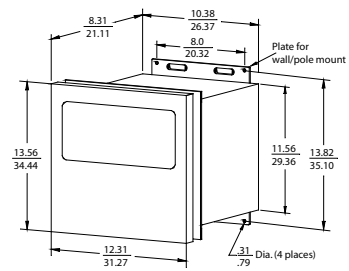
150 Freeport Road, Pittsburgh, PA 15238  
Ph. +1-412-828-9040, Fax +1-412-826-0399  
www.ametekpi.com



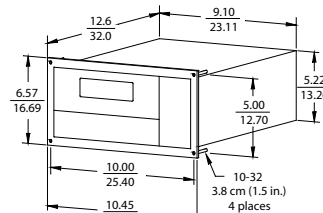
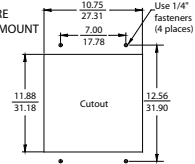
© 2012, by AMETEK, Inc.  
All rights reserved. Printed in the U.S.A.  
F-0164 Rev. 4 (0112)

One of a family of innovative process analyzer solutions from AMETEK Process Instruments.  
Specifications subject to change without notice.

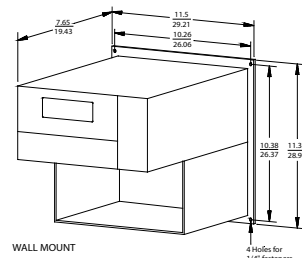
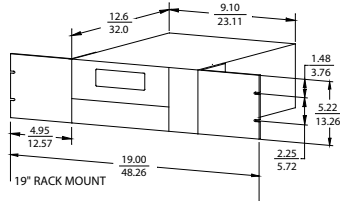
## CONTROL UNIT



STANDARD ENCLOSURE  
NEMA 4 WALL/PANEL MOUNT



PANEL MOUNT  
Panel Cutout: 9.50" x 5.56" (24.13 cm x 14.12 cm)



APPROX. WEIGHTS  
NEMA 4 WALL/PANEL MOUNT: 28 LB (12.7 KG)  
19" RACK MOUNT: 14 LB (6.35 KG)  
PANEL MOUNT: 14 LB (6.35 KG)  
WALL MOUNT: 14 LB (6.35 KG)

## SALES AND MANUFACTURING:

**USA - Delaware**  
455 Corporate Blvd., Newark DE 19702 • Tel: +1-302-456-4400, Fax: +1-302-456-4444

**USA - Oklahoma**  
2001 N. Indianwood Ave., Broken Arrow OK 74012 • Tel: +1-918-250-7200, Fax: +1-918-459-0165

**CANADA - Alberta**  
2876 Sunridge Way N.E., Calgary, AB T1Y 7H9 • Tel: +1-403-235-8400, Fax: +1-403-248-3550

## WORLDWIDE SALES AND SERVICE LOCATIONS:

**USA - Texas**  
Tel: +1-713-466-4900, Fax: +1-713-849-1924

**CHINA**  
Beijing / Tel: 86 10 8526 2111, Fax: 86 10 8526 2141  
Chengdu / Tel: 86 28 8675 8111, Fax: 86 28 8675 8141  
Guangzhou / Tel: 86 20 8363 4768, Fax: 86 20 8363 3701  
Shanghai / Tel: 86 21 5868 5111, Fax: 86 21 5866 0969

**FRANCE**  
Tel: 33 1 30 68 89 20, Fax: 33 1 30 68 89 29

**GERMANY**  
Tel: 49 21 59 91 36 0, Fax: 49 21 59 91 36 39

**INDIA**  
Tel: 91 80 6782 3200, Fax: 91 80 6782 3232

**SINGAPORE**  
Tel: 65 6484 2388, Fax: 65 6481 6588

THE  
RMOX<sup>®</sup>