

WDG-IVC

FLUE GAS OXYGEN & COMBUSTIBLES ANALYZER

Close-coupled extractive design for fast response in a wide range of flue gas applications up to 3000°F (1648°C). Completely field serviceable.



SENSOR

Principle of Operation: Zirconium oxide for net oxygen measurement and dual hot-wire catalytic detectors for combustibles.

Output Range:

Oxygen: From 0-1 to 0-100%
 Combustibles: From 0-2,000 PPM to 0-10,000 PPM or from 0-1% to 0-5%

Accuracy:

Oxygen: ±0.75% of measured value or ±0.05%, whichever is greater
 Combustibles: ±2% of full scale output range

Response - Oxygen: 90% of a step change < 13 seconds

Max. Sample Dewpoint: 392°F (200°C)

Sample Pressure: ±10 in. water gauge

Environment:

Ambient Temp.: -5°F to 160°F (-20°C to 71°C); -5°F to 140°F (-20°C to 60°C) with Div. 2 Option
 Relative Humidity: 10% to 90%, non-condensing

Enclosure: Lift-off NEMA 3R, weather resistant, stainless steel. Optional hinged NEMA 4X (IP56), explosion-proof, purged, and floor mount versions available.

Power Requirements: 115 VAC, ±10%, 47-63 Hz, 600 VA max. (650 VA max. w/floor mount option); 230 VAC, ±10%, 47-63 Hz, 1850 VA max. (1900 VA max. w/floor mount option)

Calibration Gas Requirements: Use calibration gases @ 10 psig, 1.5 scfh (0.70 kg/cm², 0.7 L/min.)

O₂ Span Gas: Air or from 1.0% to 100% O₂, balance N₂

O₂ and Comb. Zero Gases: From 0.1 to 10% O₂, balance N₂

Comb. Span Gas: 60 to 80% (PPM ranges) or 40% to 60% (% ranges) of the selected comb. recorder output range in certified equal mixtures of CO + H₂, 3-4% O₂, balance N₂

Drift: < 0.1% of cell output per month (< 0.005% O₂ per month with 2% O₂ applied)

Aspirator Air Requirements: 10 to 20 scfh (4.72 to 9.4 L/min.) at 15 to 100 psig (1.05 to 7.04 kg/cm²)

Max. Flue Gas Temp. / Probe Type / Lengths:

1300°F (704°C) / 316 SS / 36" - 108"(91 cm - 274 cm)
 1875°F (1024°C) / 310 SS / 36" - 108"(91 cm - 274 cm)
 3000°F (1648°C) / Hexoloy® / 24" - 72" (60 cm - 182 cm)

SERIES 2000 CONTROL UNIT



Display: Four line x 20-character vacuum fluorescent. Displays combinations of oxygen, PPM or % combustibles, time and date, cell temperature, user programmable text, thermocouple mV or cell mV. Password protection, programmable pressure compensation and context-sensitive help are also provided.

Analog Output: Two isolated linear current outputs for O₂ and one for combustibles.

Select O₂, combustibles, cell temperature, thermocouple mV or cell mV. Each output can be 4-20 mA, 0-20 mA, 20-4 mA or 20-0 mA and is fully scalable. Hold or track during calibration and select degree of damping. Max. load 1200 ohms.

Alarms: Two independent oxygen alarms, each high or low selectable. One alarm can be assigned as oxygen, calibrate or verify. Two high combustibles. Set relays to energize or deenergize on alarm.

Contact Rating: 0.5 A, 30V, 10VA max. noninductive load, AC or DC

Diagnostics: Watchdog timer and service alarms. System test for A/D, RAM, EEPROM and keypad. Display line 4 reserved for full text error and diagnostic messages. Twenty entry event log.

Calibration: Oxygen cell lifetime extender. Calibrate or verify calibration. Store last calibration and verification data. Selectable calibration gas run time and process recovery time. Timed automatic calibration with optional Remote Calibration Unit.

Communications: RS-485 2-way addressable

Environment:

Ambient Temp.: 14° to 122°F (-10° to 50°C)
 Relative Humidity: 10% to 80%, non-condensing

Power Requirements: Nominal 115-230 VAC ±10%, 47-63 Hz, 75 VA max.

Enclosure: Standard weatherproof NEMA 4 (IP 56) wall/panel mount. Optional GP (General Purpose) wall mount, GP 19" rack mount, GP panel mount, or stainless steel weatherproof NEMA 4X (IP 56) wall/panel mount. All are UL Listed for NEC Class I, Division 2 areas. Purged and explosion-proof versions also available.

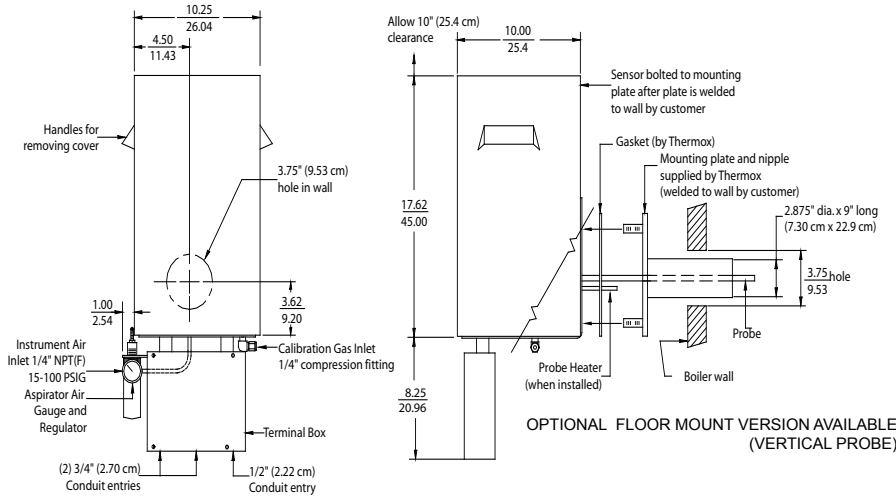
System Compliance:

EMC Directive 2004/108/EC
 Low Voltage Directive 73/23/EEC

WDG-IVC ANALYZER

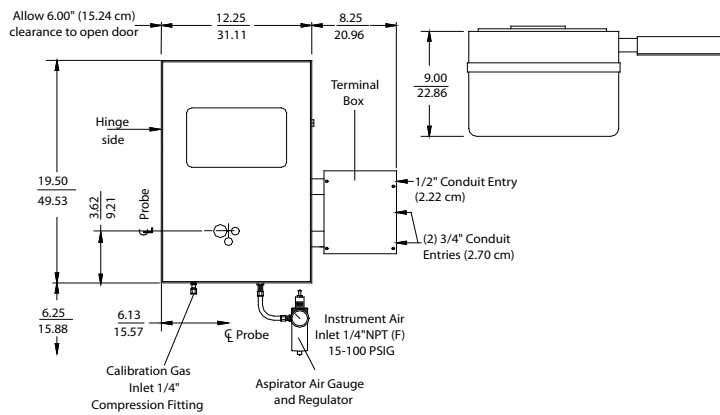
STANDARD LIFT-OFF SENSOR ENCLOSURE

APPROX. WEIGHT: 37.6 LB (17KG)



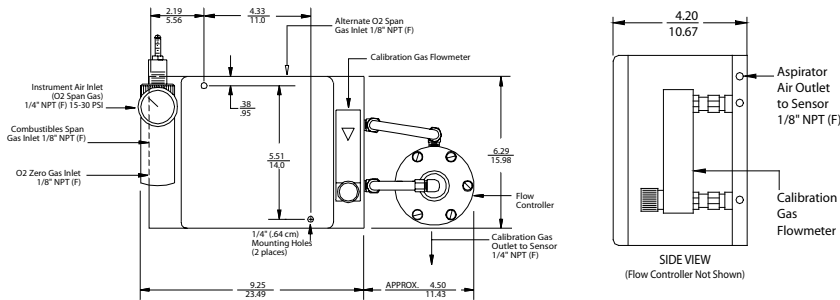
OPTIONAL: HINGED SENSOR ENCLOSURE

APPROX. WEIGHT: 53 LB (24 KG)



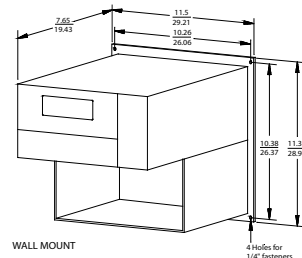
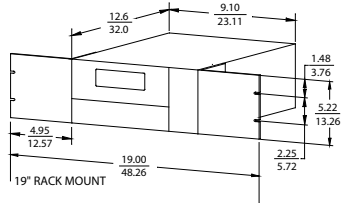
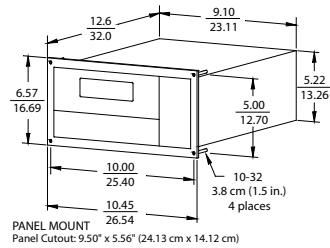
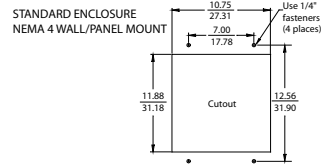
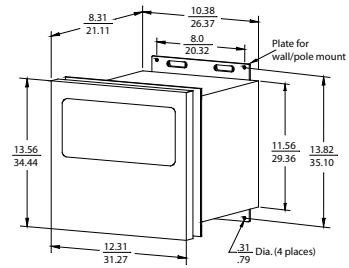
REMOTE CALIBRATION UNIT

RCU ENCLOSURE NEMA 4X - APPROX. WEIGHT: 8.0 LB (3.6 KG)



- NOTES:
1. All static performance characteristics are with operating variables constant.
 2. System accuracy referenced to 0.1 to 10% calibrated range.
 3. Response is to calibration gas (without flame arrestors).

CONTROL UNIT



APPROX. WEIGHTS
NEMA 4 WALL/PANEL MOUNT: 28 LB (12.7 KG)
19" RACK MOUNT: 14 LB (6.35 KG)
PANEL MOUNT: 14 LB (6.35 KG)
WALL MOUNT: 14 LB (6.35 KG)



PROCESS INSTRUMENTS

150 Freeport Road, Pittsburgh, PA 15238
Ph. +1-412-828-9040, Fax +1-412-826-0399
www.ametekpi.com



© 2012, by AMETEK, Inc.
All rights reserved. Printed in the U.S.A.
F-0196 Rev. 4 (0112)

One of a family of innovative process analyzer solutions from AMETEK Process Instruments.
Specifications subject to change without notice.

SALES AND MANUFACTURING:

USA - Delaware
455 Corporate Blvd., Newark DE 19702 • Tel: +1-302-456-4400, Fax: +1-302-456-4444

USA - Oklahoma
2001 N. Indianwood Ave., Broken Arrow OK 74012 • Tel: +1-918-250-7200, Fax: +1-918-459-0165

CANADA - Alberta
2876 Sunridge Way N.E., Calgary, AB T1Y 7H9 • Tel: +1-403-235-8400, Fax: +1-403-248-3550

WORLDWIDE SALES AND SERVICE LOCATIONS:

USA - Texas
Tel: +1-713-466-4900, Fax: +1-713-849-1924

CHINA
Beijing / Tel: 86 10 8526 2111, Fax: 86 10 8526 2141
Chengdu / Tel: 86 28 8675 8111, Fax: 86 28 8675 8141
Guangzhou / Tel: 86 20 8363 4768, Fax: 86 20 8363 3701
Shanghai / Tel: 86 21 5868 5111, Fax: 86 21 5866 0969

FRANCE
Tel: 33 1 30 68 89 20, Fax: 33 1 30 68 89 29

GERMANY
Tel: 49 21 59 91 36 0, Fax: 49 21 59 91 36 39

INDIA
Tel: 91 80 6782 3200, Fax: 91 80 6782 3232

SINGAPORE
Tel: 65 6484 2388, Fax: 65 6481 6588

THE THERMOX®