

WDG-INSITU REPLACEMENT PROBE

FOR WESTINGHOUSE/HAGEN 218A, ROSEMOUNT WC3000, AND YOKOGAWA PROBES

- || Tired of having to remove your oxygen insitu probe completely from the process flange to field-repair cell, thermocouple, or heater assemblies?
- || Tired of manufacturers who do not have easy field-repairable oxygen insitu probes and the factory-repair charge is the price of a new probe?
- || Are you now finding out you are not receiving the high level of customer service you were promised when you purchased your oxygen insitu probe?

If you answer yes to any of these questions, consider replacing your current oxygen insitu probe with an Thermox WDG-Insitu oxygen probe.

FEATURES / BENEFITS

Designed for continuous use with minimum attention, the unit is completely field-serviceable with easy access to all components. The unique design of the Insitu sensor allows the inner tube structure, where the oxygen cell and thermocouple/heater assembly is housed, to be easily removed from the outer protection tube that remains in the process. There is no need to disconnect field wiring or return the probe to the factory for repair.

Over the past five years Thermox has been replacing Westinghouse/Hagan, or Rosemount WC3000 probes, utilizing the existing electronics with the WDG-Insitu. The WC3000 control electronics require no software or wiring interconnection configuration changes. The Thermox probe is easily retrofitted to work with the Westinghouse 218A controller with only a minor change. Thermox has successfully retrofitted hundreds

of systems, which has led to higher system reliability. Customer acceptance in retrofitting with a Thermox WDG-Insitu oxygen probe has been exceptional.

The range includes a replacement for the Yokogawa ZO21D-L. The Thermox probe is provided with a cold junction reference device (similar to Yokogawa part number E7042AV) that enables the use of the existing interconnect cable between the following Yokogawa converters and the new Thermox replacement probe:

ZA8C AV8C ZH21
ZO21C AV8G HA400

No converter software parameter changes are required to operate the Thermox probe with the Yokogawa electronics.

Thermox replacement probes for Westinghouse/Hagan or Rosemount WC3000 and Yokogawa ZO21-D-L are available in 0.5' (.228 m), 1.5' (.457 m), 3' (.914 m), 6' (1.83 m) and 9' (2.74 m) lengths. Each probe is provided with a 2" MNPT connection flange. It can also be provided with ANSI standard flanges

or Westinghouse mini or tube shield special flanges. Interconnection wiring terminal information is found on the inside of the probe terminal box cover with polarity noted on the cell, T/C and cold junction reference (Yokogawa only). A User Manual with installation and maintenance instructions is included.

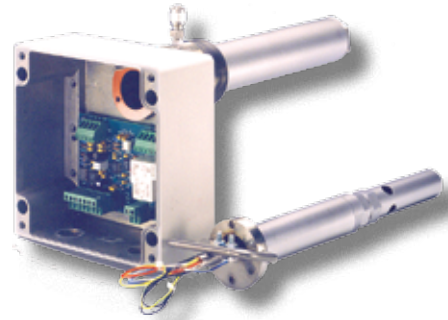
Optional probe enclosures are available - CE 0081,
Ⓢ II 2 G, EEx d IIC T3 or NEC
Class I, Division 1, Groups B, C & D.

Each probe is available with optional 20-micron stainless steel or 5-micron ceramic filters with deflector shield. Flame arrestors can be added if one of the hazardous location enclosure options is not ordered. An optional manual calibration panel is also available. The manual calibration panel includes selector valve, plumbed fittings and a panel mounted flowmeter. The assembly mounts directly behind the junction box of the Insitu probe and allows calibration gases to be permanently plumbed to the selector valve.



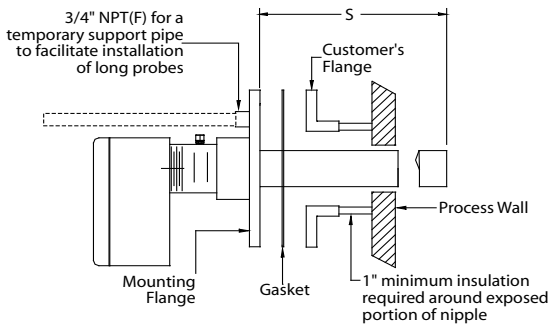
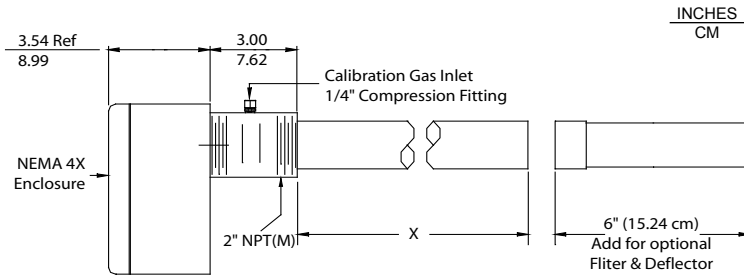
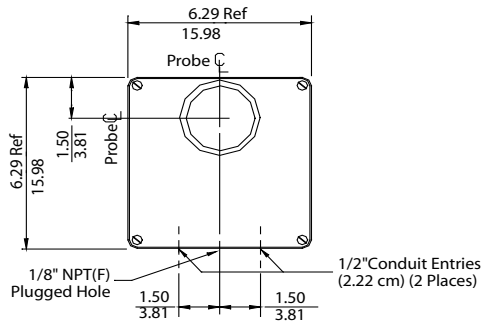
WDG-INSITU Replacement Probe

AMETEK is a leading global producer of electronic instruments, electromechanical devices, and engineered industrial materials. Thermox pioneered the industrial use of zirconium oxide to measure oxygen in 1967, and is supported by more than 80 sales representative and distributor organizations worldwide. The Thermox facility of AMETEK is ISO 9001 registered. Visit our web site at www.ametekpi.com for information on our complete product line of combustion flue gas, trace oxygen, feed forward, premix gas analyzers and web enabled remote service system.



Open WDG-Insitu with Removable Inner Probe

SENSOR



PROBE TYPES	X INCHES / CM	S INCHES / CM	WEIGHT* LB / KG
9"	8.75 / 22.2	7.0 / 17.8	15 / 6.8
18"	17.75 / 45.1	16.0 / 40.6	20 / 9.1
36"	38.75 / 98.4	37.0 / 94.0	25 / 11.3
72"	74.75 / 189.9	73.0 / 185.4	40 / 18.1
108"	110.75 / 281.3	109.0 / 276.8	50 / 22.7

*APPROX. WEIGHT – INCLUDES PROBE + FLANGE.
108" PROBE MUST HAVE INTERNAL SUPPORT PROVIDED BY CUSTOMER.
STANDARD THERMOX MOUNTING FLANGES: 3" – 300# AND 4" – 150#.
OTHER CONFIGURATIONS ARE AVAILABLE UPON REQUEST.



150 Freeport Road, Pittsburgh, PA 15238
Ph. +1-412-828-9040, Fax +1-412-826-0399
www.ametekpi.com



© 2011, by AMETEK, Inc.
All rights reserved. Printed in the U.S.A.
F-0149 Rev. 3 (0111)

One of a family of innovative process analyzer solutions from AMETEK Process Instruments.
Specifications subject to change without notice.

SALES AND MANUFACTURING:

USA - Delaware
455 Corporate Blvd., Newark DE 19702 • Tel: +1-302-456-4400, Fax: +1-302-456-4444

USA - Oklahoma
2001 N. Indianwood Ave., Broken Arrow OK 74012 • Tel: +1-918-250-7200, Fax: +1-918-459-0165

CANADA - Alberta
2876 Sunridge Way N.E., Calgary, AB T1Y 7H9 • Tel: +1-403-235-8400, Fax: +1-403-248-3550

WORLDWIDE SALES AND SERVICE LOCATIONS:

USA - Texas
Tel: +1-713-466-4900, Fax: +1-713-849-1924

CHINA
Beijing / Tel: 86 10 8526 2111, Fax: 86 10 8526 2141
Chengdu / Tel: 86 28 8675 8111, Fax: 86 28 8675 8141
Guangzhou / Tel: 86 20 8363 4768, Fax: 86 20 8363 3701
Shanghai / Tel: 86 21 5868 5111, Fax: 86 21 5866 0969

FRANCE
Tel: 33 1 30 68 89 20, Fax: 33 1 30 68 89 29

GERMANY
Tel: 49 21 59 91 36 0, Fax: 49 21 59 91 3639

INDIA
Tel: 91 80 6782 3200, Fax: 91 80 6782 3232

SINGAPORE
Tel: 65 6484 2388, Fax: 65 6481 6588

THERMOX®