

PRODUCT DATA SHEET

StreamPro Process Mass Spectrometer

Streamlined online gas analysis

AMETEK's StreamPro process mass spectrometer offers real-time gas analysis in a reliable easy-to-use, compact package for a wide range of industrial applications.

Multicomponent analysis

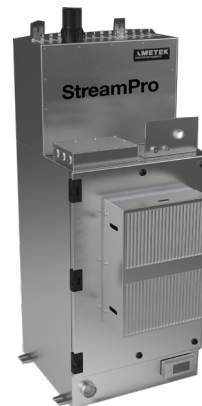
Real-time process monitoring of multiple components is straightforward with the StreamPro's powerful, easy-to-use Process 2000 software. Complex overlapping spectra are handled automatically, with data output directly in concentration units. Different calibration and analysis methods can be assigned to each sample port.

Replaces process gas chromatographs

Mass spectrometry is a very rapid analytical method allowing analysis of multiple sample streams in seconds and can directly replace gas chromatographs and other discrete analytical devices. This field-proven system means you can depend on the StreamPro for your critical process analysis and control applications.

Easy to use and maintain

The software provides easy setup and operation and includes advanced alarm and automation capabilities. Autocalibration maintains the performance and accuracy of the system for quantitative analysis. The on-board computer enables auto-start to prevent loss of data or interruption of your process during power failure. Self-diagnostics and modular design ensure ease of maintenance by your own personnel on site, with remote support available for additional factory diagnosis and troubleshooting. There is no need for the expensive service contract typical of most process mass spectrometers.



KEY BENEFITS

- Data within seconds
- Modular design for fast, easy field repair
- Versatile multi-component analysis
- Streamlined, economical footprint

APPLICATIONS

- Ammonia
- Ethylene
- Ethylene oxide
- Polyethylene
- Steel manufacturing, e.g. BOF, VOD
- Syngas production
- Environmental - BTX, VOCs, VCM, EDC
- Methanol
- Fermentation
- Solvent drying
- Scrubbers
- Reaction end point
- Fuel cell research

KEY MARKETS

- Pharmaceutical
- Hydrocarbon processing
- R&D/Process development

PERFORMANCE SPECIFICATIONS

Range	1-200 AMU
Inlet	Expandable sample selection manifold with electric or pneumatic valves. Membrane inlet system for ambient air samples
Inlet pressure (gas)	30 PSIG (207kPa) to 3 Torr absolute
Accuracy	Absolute Standard Deviation better than 25 ppm on 1% component, e.g. argon in air (0.25% RSD)
Communication	Standards include: RS-485, RS-232, fiber optics, Modbus, OPC. Optional analog/digital outputs available
Detection range	From 10 ppm to 100% with gas samples, Faraday cup. Optional electron multiplier for lower LODs
Power	115/230 VAC, 50/60 Hz, 1000 W
Ambient temperature	-20 to 50°C (-4 to 122°F)
Dimensions (W x H x D)	629 x 1468 x 637 mm (24.8 x 57.8 x 25.1 in.)
PC	Windows®-based Process 2000 software running up to Win 10
Enclosures	Weather resistant, stainless steel, NEC purged, and designed for CI D1 and 2 versions available

SALES, SERVICE & MANUFACTURING

USA - Pennsylvania

150 Freeport Road
Pittsburgh PA 15238
Tel: +1 412 828 9040
Fax: +1 412 826 0399

USA - Delaware

455 Corporate Blvd.
Newark DE 19702
Tel: +1 302 456 4400
Fax: +1 302 456 4444

Canada - Alberta

2876 Sunridge Way NE
Calgary AB T1Y 7H9
Tel: +1 403 235 8400
Fax: +1 403 248 3550

WORLDWIDE SALES AND SERVICE LOCATIONS

USA

Tel: +1 713 466 4900
Fax: +1 713 849 1924

Brazil

Tel: +55 19 2107 4100

France

Tel: +33 1 30 68 89 20
Fax: +33 1 30 68 89 99

Germany

Tel: +49 2159 9136 0
Fax: +49 2159 9136 39

India

Tel: +91 80 6782 3200
Fax: +91 80 6780 3232

Singapore

Tel: +65 6484 2388
Fax: +65 6481 6588

China

Beijing
Tel: +86 10 8526 2111
Fax: +86 10 8526 2141
Chengdu
Tel: +86 28 8675 8111
Fax: +86 28 8675 8141
Shanghai
Tel: +86 21 5868 5111
Fax: +86 21 5866 0969



© 2019, by AMETEK, Inc. All rights reserved. Printed in the U.S.A. PI0005 (0719)
One of a family of innovative process analyzer solutions from AMETEK Process Instruments.
Specifications subject to change without notice.

