

PRODUCT DATA SHEET

AMEVision for 3050 Moisture Analyzers

A multi-analyzer communication and display system including all functions of the 3050 Configurator Software, for up to eight 3050 series analyzers per AMEVision unit

AMEVision allows users to continually monitor the measurement and diagnostic information from up to eight 3050 series moisture analyzers. AMEVision provides real-time moisture measurements, trends data, and details a variety of maintenance and troubleshooting information from the 3050. Users can communicate with AMEVision via Modbus RS485 and Ethernet LAN.

Intuitive user interface

AMEVision replaces or augments the 3050 Configurator Software. It provides all the same features and capabilities, including span verification and zero span calibration. Additionally, a user can program the 3050 remotely or adjust any parameter.

Installation and data access flexibility

With a 4.2" video graphics array (VGA) display, AMEVision displays all necessary information to monitor the performance of the 3050 analyzers. Users can mount AMEVision in a convenient, easily accessible location to monitor the 3050 series analyzer. A USB port allows users to extract data or upload new configuration files directly to AMEVision.

Plug and play

The 3050 series analyzer can be preconfigured at the factory to directly communicate with AMEVision, eliminating the time and effort to set-up the analyzer. A preconfigured unit will have the "AMEVision Ready" designator (pictured below) on its label.

AMEVISION Ready

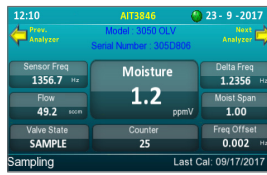


KEY BENEFITS

- Compatible with models:
 - 3050-OLV
 - 3050-SLR
 - 3050-DO
 - 3050-TE
- Connect up to eight analyzers on one unit
- Trend history
- Automatic data capture and logging
- Calibration history
- Alarm history



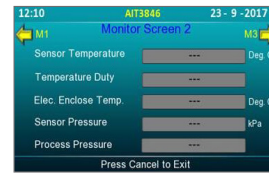
Main Screen-Single Analyzer



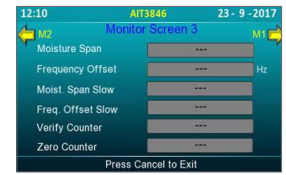
Main Screen - Multiple Analyzers



Monitor Screen 1



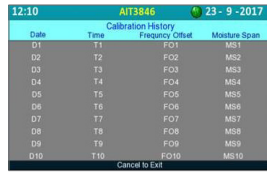
Monitor Screen 2



Monitor Screen 3



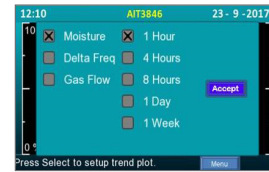
Transfer Data Screen



Calibration History



Alarm History



Trend Data

PERFORMANCE SPECIFICATIONS

Display	4.2" color 1/4W VGA graphical user interface password protected
Keypad	18 key membrane
Input	Two wire Modbus RTU (19200 Baud Rate, Even Parity, 1 Stop Bit) from analyzer Host capable of up to eight analyzers
Digital outputs	Two or four wire Modbus RTU TCP/IP Ethernet with embedded web server (RJ45 connection) USB port for data collection or software update
Functionality	3050 configurator software
Environment	Ambient temperatures from -25 to +60°C
Power requirements	Nominal 115-230 VAC ±10%, 47-63 Hz, 75 VA max
System compliance	EMC directive 2004/108/EC low voltage directive 73/23/EEC Two hazardous area configurations: NEC/CEC Class I, Division 2 and ATEX Zone 2
Dimensions (W x H x D)	228.8 x 304.8 x 152.4 mm (9 x 12 x 6 in.)
Weight	4.54 kg (10 lbs.)
Enclosure	NEMA 4

SALES, SERVICE & MANUFACTURING

USA - Pennsylvania
150 Freeport Road
Pittsburgh PA 15238
Tel: +1 412 828 9040
Fax: +1 412 826 0399

USA - Delaware
455 Corporate Blvd.
Newark DE 19702
Tel: +1 302 456 4400
Fax: +1 302 456 4444

Canada - Alberta
2876 Sunridge Way NE
Calgary AB T1Y 7H9
Tel: +1 403 235 8400
Fax: +1 403 248 3550

WORLDWIDE SALES AND SERVICE LOCATIONS

USA
Tel: +1 713 466 4900
Fax: +1 713 849 1924

Brazil
Tel: +55 19 2107 4100

France
Tel: +33 1 30 68 89 20
Fax: +33 1 30 68 89 99

Germany
Tel: +49 2159 9136 0
Fax: +49 2159 9136 39

India
Tel: +91 80 6782 3200
Fax: +91 80 6780 3232

Singapore
Tel: +65 6484 2388
Fax: +65 6481 6588

China
Beijing
Tel: +86 10 8526 2111
Fax: +86 10 8526 2141
Chengdu
Tel: +86 28 8675 8111
Fax: +86 28 8675 8141
Shanghai
Tel: +86 21 5868 5111
Fax: +86 21 5866 0969



© 2018, by AMETEK, Inc. All rights reserved. Printed in the U.S.A. F-0551 (0818)
One of a family of innovative process analyzer solutions from AMETEK Process Instruments. Specifications subject to change without notice.



To find out more or request a quote visit our website

ametekpi.com