

PRODUCT DATA SHEET

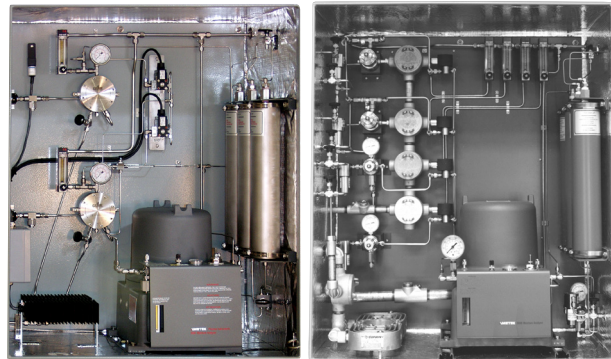
5000 Sample Systems

Engineered to optimize the performance of all AMETEK moisture analyzers

AMETEK's 5000 moisture analyzers come with a series of optional single and multi-point sample systems. These systems are engineered to optimize the performance of AMETEK moisture analyzers.

Each 5000 Sample System includes a floor-mounted painted steel cabinet and the proper complement of sample handling components. Basic components of all systems include: bulkhead fittings, shutoff valves, filters, pressure regulator(s) with gauges, bypass flow meter(s), relief valve(s), and reference gas dryers. Also available are optional accessories for specific application requirements (stainless steel cabinets, clamshell enclosures, membrane gas/liquid separators, fast loop sampling, remote pressure reduction, etc).

The 5000 Sample System, although designed for use with the 5000 Moisture Analyzer, is available for use with other AMETEK moisture analyzer models such as the 2850, 3050-RM, 5800, 5812 and 5830, although non-5000 moisture analyzers are limited to a single sample stream. Separate specification sheets are available that describe the exceptional performance capabilities of these moisture analyzers.



KEY BENEFITS

- Confidence in the accuracy and reliability of the moisture measurement
- Single-supplier accountability
- Reduced cost per measurement point through automatic stream switching
- Lower total installation cost
- Available with a series of optional single and multi-point sample systems

APPLICATIONS

- Designed to optimize monitoring of low moisture levels

KEY MARKETS

- Petrochemical
- Refinery
- Chemical
- Natural gas

PERFORMANCE SPECIFICATIONS

Number of sample streams	One to four
Multi-stream switching time	Programmable from 2 minutes to many minutes per stream. The optimum dwell time will be determined for your application
Sample wetted parts	Stainless steel
Sample pressure	2.1 to 6.9 bar (30 to 100 psi) or up to 137.9 bar (2000 psi) with optional pressure reducer
Sample flow requirement	1500 sccm
Liquid stream capability	Atmospheric pressure boiling points up to 40°C (104°F)
Utility requirements	A/C power: 100 to 240 V, 50/60 Hz, 190 W for the sampling system, 175W (maximum) for the moisture analyzer, 500 W (maximum) for the optional cabinet heater
Maximum separation between model 5000 moisture analyzer field unit and controller	600 m (2000 ft.)
Ambient temperature	-20 to 50°C (-4 to 122°F) without heat, -40 to 50°C (-40 to 122°F) with optional electric heat. Vortex cooler option available for high-temperature operation
Physical dimensions (W x H x D)	Single-point field unit: 770 x 1530 x 460 mm (30 x 60 x 18 in.) Two, three, four-point field unit: 920 x 1680 x 460 mm (36 x 66 x 18 in.)
Weight	Can vary up to about 350 kg (770 lb.) depending on options
Approvals and certifications	NEC/CEC General Safety Requirements Field Unit: NEC/CEC Class I, Division 1, Groups B, C, D; ATEX II 2 G EEx d IIC T6 (optional: CSA special acceptance)
Controller	NEC/CEC Class I, Division 2, Groups A, B, C, D T4 Optional: Class I, Division 1, Groups B, C, D ATEX II 2 G EEx d IIC T6
Sample system	NEC/CEC Class I, Division 2, Groups B, C, D Optional: NEC/CEC Class I, Division 1, Groups B, C, D T6 to T3ATEX II 2 G EEx de m ia IIC T6 to T3. Russian Gosstandart Pattern Approval. Russian Ex Proof Certification 1ExdIICT6. Complies with all relevant European Directives

SALES, SERVICE & MANUFACTURING

USA - Pennsylvania

150 Freeport Road
Pittsburgh PA 15238
Tel: +1 412 828 9040
Fax: +1 412 826 0399

USA - Delaware

455 Corporate Blvd.
Newark DE 19702
Tel: +1 302 456 4400
Fax: +1 302 456 4444

Canada - Alberta

2876 Sunridge Way NE
Calgary AB T1Y 7H9
Tel: +1 403 235 8400
Fax: +1 403 248 3550

WORLDWIDE SALES AND SERVICE LOCATIONS

USA

Tel: +1 713 466 4900
Fax: +1 713 849 1924

Brazil

Tel: +55 19 2107 4100

France

Tel: +33 1 30 68 89 20
Fax: +33 1 30 68 89 99

Germany

Tel: +49 2159 9136 0
Fax: +49 2159 9136 39

India

Tel: +91 80 6782 3200
Fax: +91 80 6780 3232

Singapore

Tel: +65 6484 2388
Fax: +65 6481 6588

China

Beijing
Tel: +86 10 8526 2111
Fax: +86 10 8526 2141
Chengdu
Tel: +86 28 8675 8111
Fax: +86 28 8675 8141
Shanghai
Tel: +86 21 5868 5111
Fax: +86 21 5866 0969



© 2018, by AMETEK, Inc. All rights reserved. Printed in the U.S.A. F-0146 Rev 5 (0918)
One of a family of innovative process analyzer solutions from AMETEK Process Instruments. Specifications subject to change without notice.



To find out more or request a quote visit our website

 ametekpi.com